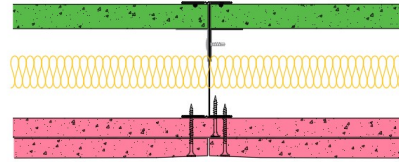


## SE92-B-62(25) - SPEEDLINE System Data Sheet - Version V1 (24-10-23)

SPEEDLINE 92mm 'I' Stud Shaft Encasement  
 @600mm Ctrs, with 2x BG Gyproc 15mm FireLine,  
 BG Gyproc 19mm CoreBoard, 25mm APR



### System Performance Breakdown

Fire Resistance:

BS476 Part 22:1987:  
 (Integrity/Insulation).

Test Ref & Date or Applied Ref & Report:

Max Height:

Thickness:

Duty Grade: BS 5234: Part 2:1992:

Sound Insulation:

**120/120 FromShaftSide, 90/90 FromLandingSide Minutes**

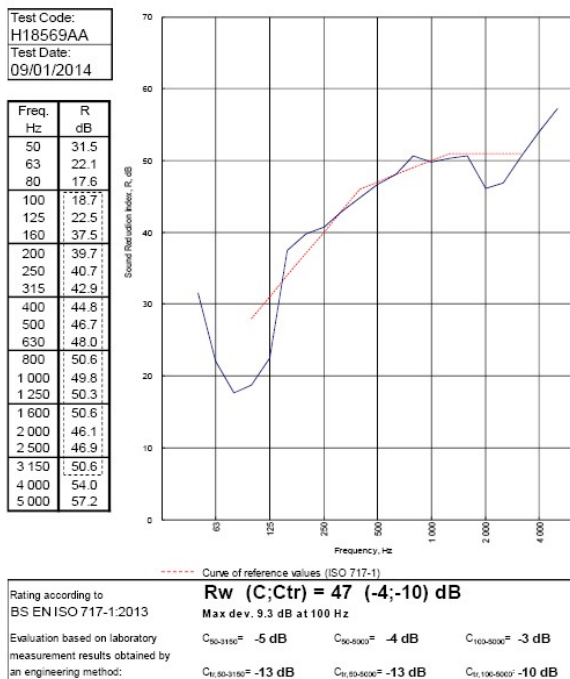
**BRE 302289 - BRE Report P102396-1012A**

**Refer to Speedline Specification Clause**

**124 mm.** (At Base Track, Excluding Finishes)

**Severe - Annexes A-F**

**47 R<sub>w</sub>dB**, Date Tested or Assessed Against - SE60-B-62(25)



TESTED AT ONE OF THE UKAS ACCREDITED LABORATORIES BELOW

- B.T.C (H-Ref on Graph)
- B.R.E
- AIRO
- S.R.L

Customer: **Metsec plc Hepsec Division**

BTC 18569A: Page 10 of 13



SPEEDLINE Drywall Systems, Adsetts House, 16 Europa View, Sheffield Business Park, Sheffield, S9 1XH.

Tel: 0114 231 8030.

Email: [enquiries@speedlinedrywall.co.uk](mailto:enquiries@speedlinedrywall.co.uk)

(As per the requirements set out in ISO/IEC 17025:2017 regarding test data the results stated have been carried out by voestalpine Metsec plc as part of the contract to supply Speedline Metal Sections to SIG Plc)